

The V152 is a single-width, C-size, VXIbus module that combines the performance of a PowerPC-based computer with the functionality of a VXI Slot-0 controller.

On-board strap options enable this module to be used as a VXI-based processor in non-Slot-0 applications.

TYPICAL APPLICATIONS

Aerospace and aircraft testing
High-performance ATE
High-performance data acquisition and control
Applications requiring a real time kernel
Embedded data acquisition

V152

Embedded PowerPC Slot-0 Controller



A powerful real-time computer in a VXI controller

FEATURES

- Single-width, C-size Slot-0 controller
- High-performance PowerPC 750 embedded processor with 233, 350 and 450 MHz clock options
- VxWorks™ operating environment for powerful real-time computing
- Ideal for high-performance data acquisition and control
- Include Ethernet, RS-232 serial port, real time clock, timers and counters
- Options available with 32, 64, 128, 256, and 512 Mbyte DRAM

GENERAL DESCRIPTION

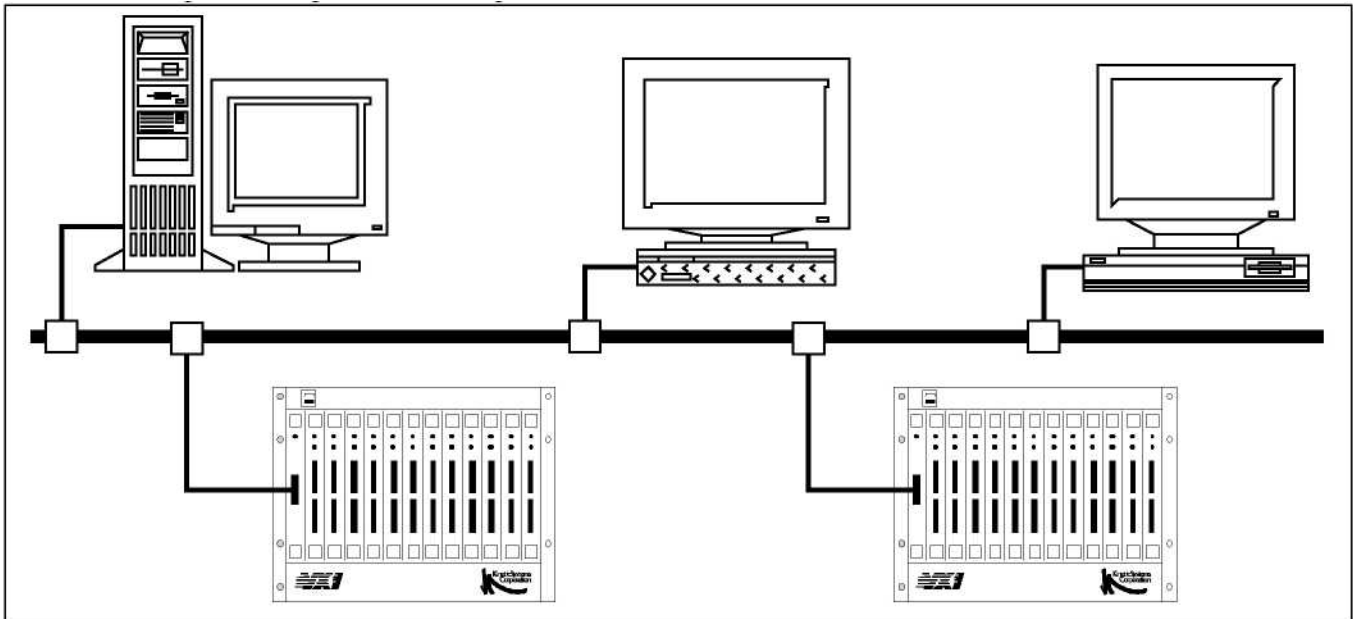
The V152 is a single-width, C-size, VXIbus module that combines the performance of a PowerPC-based computer with the functionality of a VXI Slot-0 controller. On-board strap options enable this module to be used as a VXI-based processor in non-Slot-0 applications.

Using the VxWorks™ run-time kernel, the V152 provides an extremely powerful realtime computing environment. In most applications this controller is connected to a host computer via an Ethernet link, using TCP/IP protocol and VxWorks to communicate with a host computer. The V152 is an ideal real-time embedded controller for Automatic Test Equipment (ATE) applications.

VxWorks supports a wide range of industry standards such as POSIX, ANSI C and ISO networking protocols. Providing strong interoperability, VxWorks integrates these standards with a set of tools specifically designed to meet the requirements of the real-time developer. Note that the Model AL51 VxWorks Board Support Package and the Model AS 12 VxWorks OS Runtime License are required for operation under the VxWorks Operating System.

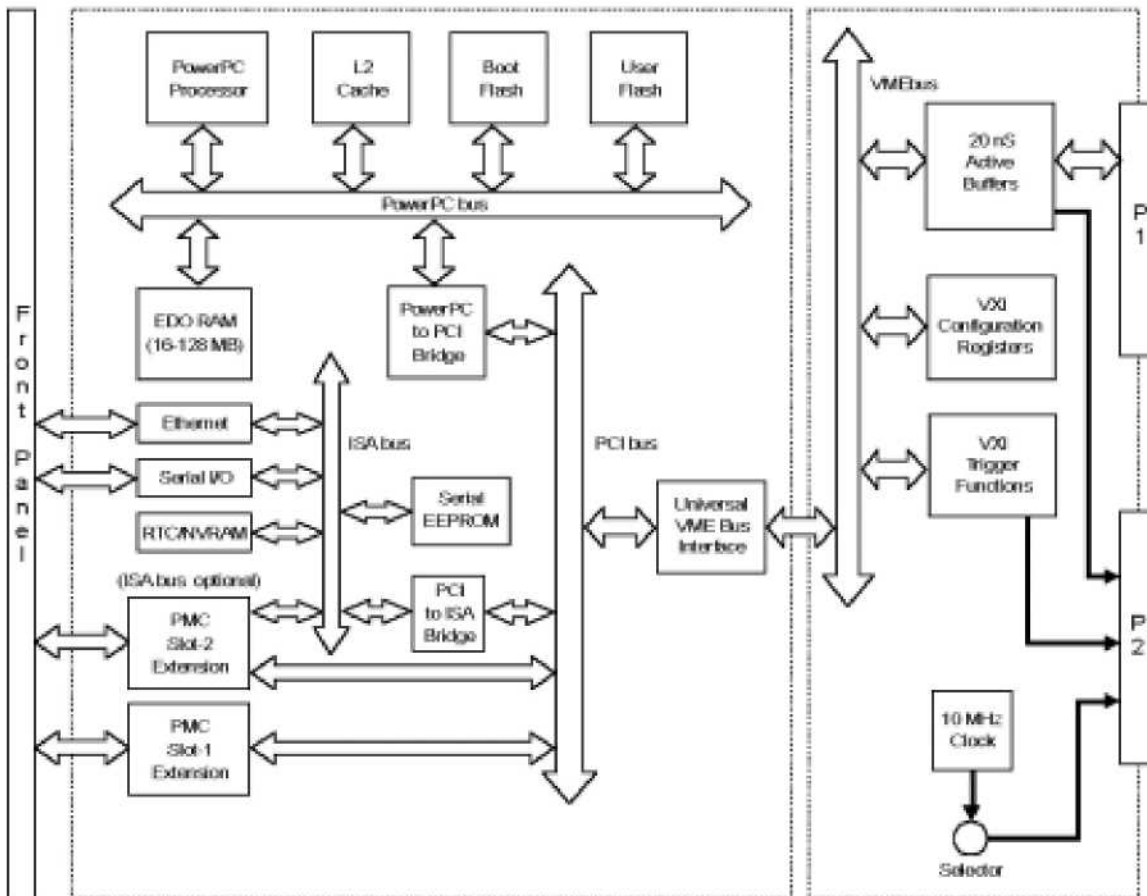
Wind River Systems' VxWorks integrated cross-development environment offers a high-performance operating system with sophisticated networking facilities and a complete set of cross-development tools specifically designed to work with the most popular computer platforms.

A Host-target Configuration using the V152



| Item | Specification |
|-------------------|---|
| Processor Options | PowerPC 750 (233 MHz clock) PowerPC 750 (350 MHz clock) PowerPC 750 (450 MHz clock) |
| A32 Space Memory | 512 Mbyte available |
| A64 | |
| DRAM Memory | Options available with 32, 64, 128, 256, and 512 Mbyte DRAM |
| L2 Cache Memory | 1 Mbyte SRAM |
| Bank A Flash | 8 Mbyte |

| | |
|------------------------------|--|
| Bank B Flash | Up to 1 Mbyte |
| RTC/SRAM/battery | Real-time clock and NVRAM |
| PMC Slots | Two for 32-bit PMC modules |
| Ethernet Interface | Ethernet controller 10/100 Base T |
| Serial I/O | RS-232 compatible port |
| Counters/timers | 16-bit/4 32-bit programmable |
| Additional Features | Reset and abort key, status LEDs, serial PROM for board configuration, voltage sensors, watchdog timer |
| Power Requirements | +5v 5428 mA - 5.2v 270 mA - 2v 96 mA 12v 100 mA -12v 100 mA |
| Environmental and Mechanical | |
| Temperature range | |
| Operational | 0°C to +50°C |
| Storage | -25°C to +75°C |
| Relative humidity | 0 to 85%, non-condensing, to 40°C |
| Cooling requirements | 10 CFM |
| Dimensions | 340 mm x 233.35 mm x 30.48 mm (C-size VXIbus) |
| Front-panel potential | Chassis ground |





RELATED PRODUCTS

Various disk drives, tape drives and other accessories are available for the V152. Contact the factory for details

ORDERING INFORMATION

| MODEL | DESCRIPTION |
|-----------|---|
| V152-AB41 | PowerPC 750-350 Slot-0 Controller, 256 Mbyte DRAM/8 Mbyte Flash/2 PMC |
| V152-AC51 | PowerPC 750-450 Slot-0 Controller, 512 Mbyte DRAM/8 Mbyte Flash/2 PMC |

Updated June 17, 2005

Copyright © 2005 KineticSystems Company, LLC. All rights reserved.

KineticSystems Company, LLC

900 N. State St.
Lockport, IL 60441-2200

Toll-Free (US and Canada):

phone 1-800-DATA NOW
1-800-328-2669

Direct:

phone +1-815-838-0005
fax +1-815-838-4424

Email:

mkt-info@kscorp.com

To find your local sales representative or distributor or to learn more about KineticSystems' products visit:

www.kscorp.com